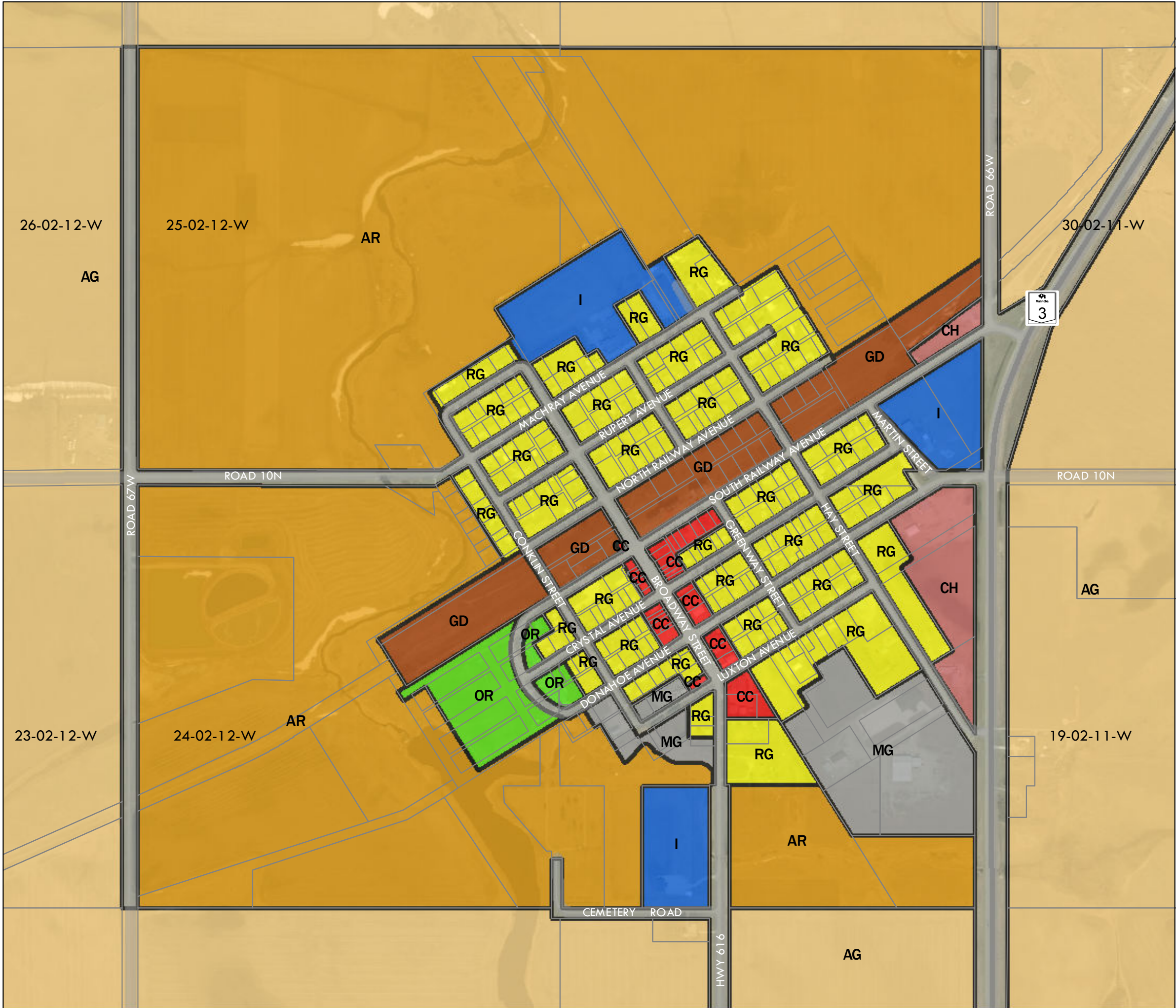


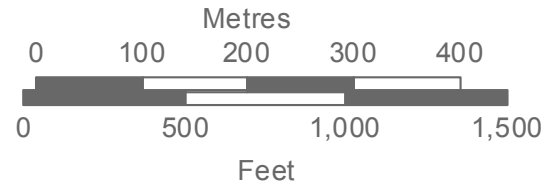
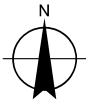
VILLAGE OF CRYSTAL CITY
ZONING BY-LAW

By-Law No. 9 - 92 with
consolidated amendments



- Assessment Parcels
- Zones**
- AR - Agriculture Restricted Zone
 - CC - Central Commercial Zone
 - GD - General Development Zone
 - MG - General Industrial Zone
 - CH - Highway Commercial Zone
 - I - Institutional Zone
 - OR - Open Space and Recreational Zone
 - RG - Residential General Zone
 - AG - Agricultural General Zone*

*Per RM of Louise, Zoning By-law No. 7-92



Map consolidation
as of May 2018

